

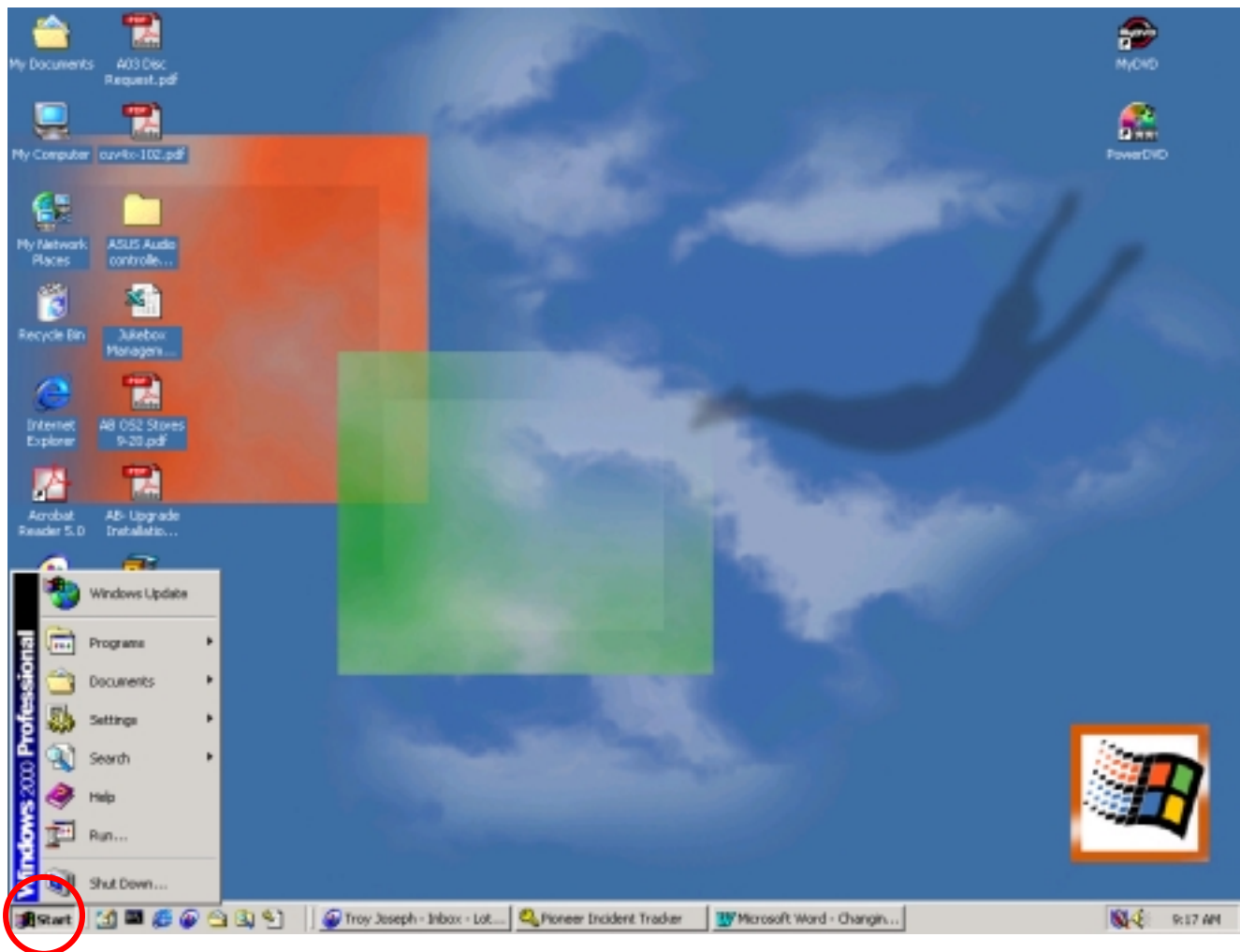
Drives – Changing IDE ATA/ATAPI Controller Settings in Windows 2000

OVERVIEW:

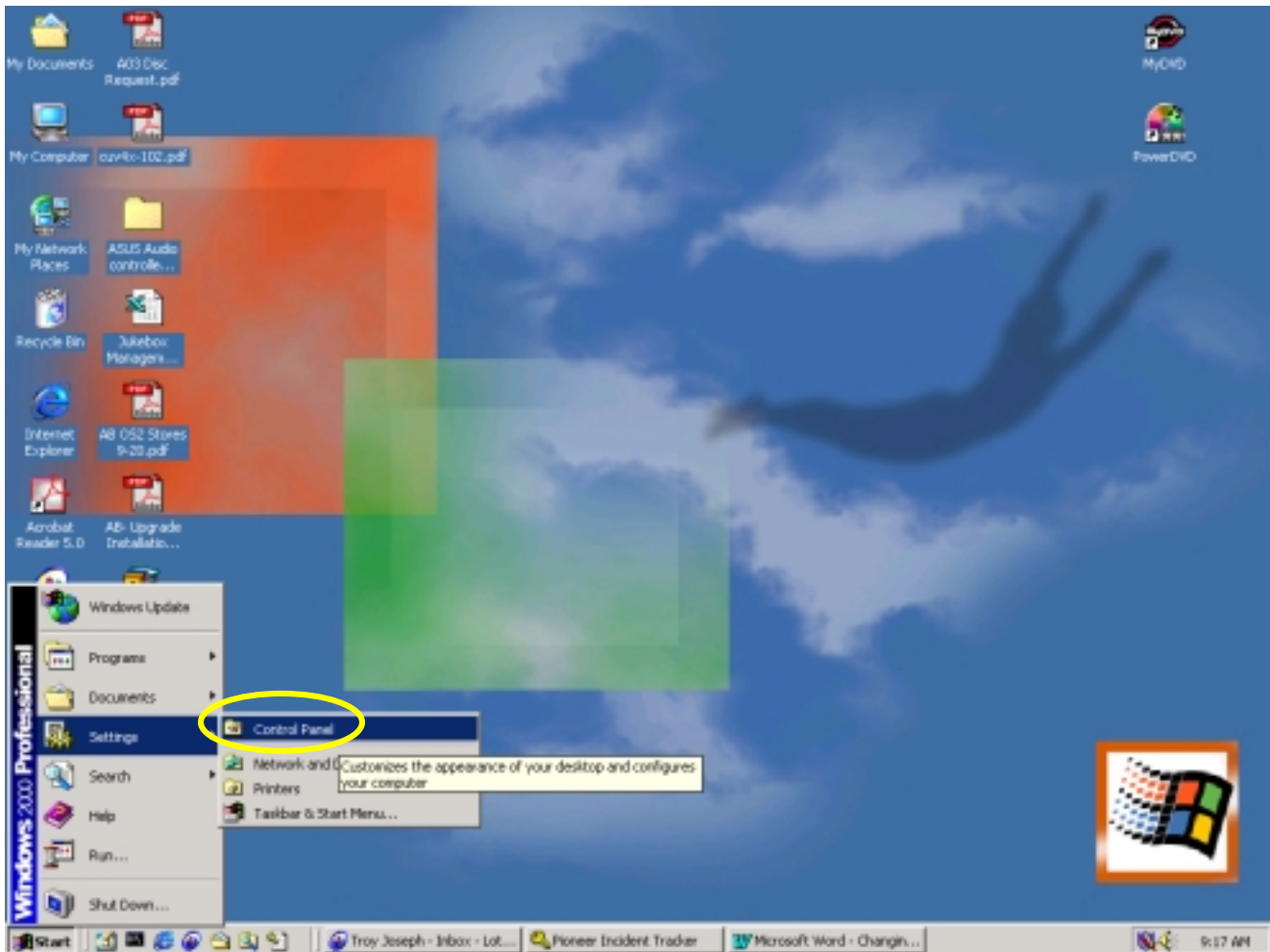
Customers have reported errors when working with Pioneer drives installed in a computer running the Microsoft® Windows 2000® Operating System. The error codes may be related to the IDE ATA/ATAPI controller settings. A possible solution to this error is provided in this document.

PROCEDURE:

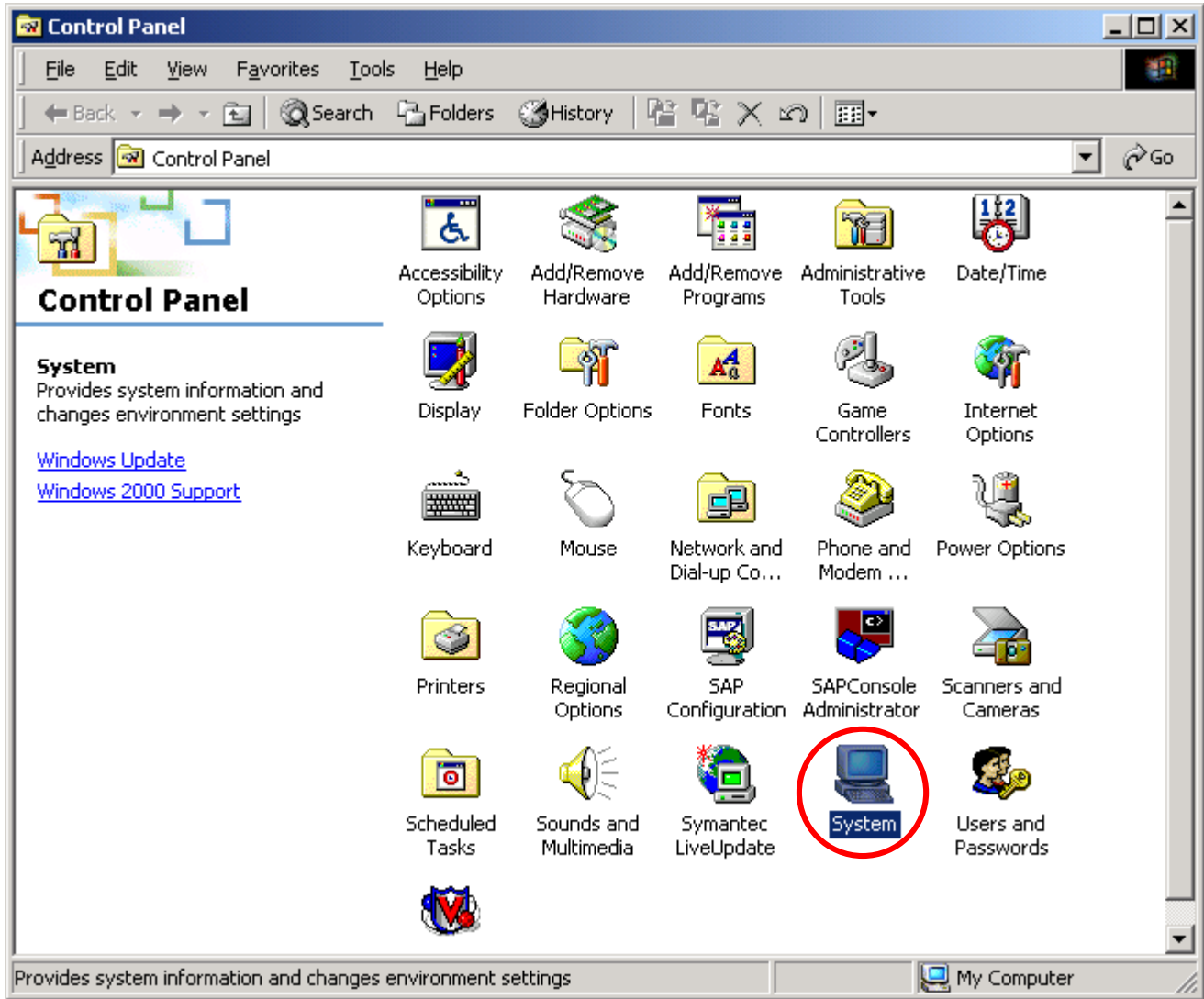
1. Access the motherboard BIOS and write down the location of the drive.
*Example: Primary Master, Primary Slave, Secondary Master Secondary Slave
(refer to your motherboard manual for assistance)*
2. Click the **Start** button as shown below.



3. Click on **Settings** from within the Start menu.
4. Select **Control Panel** from the Settings menu (shown below).

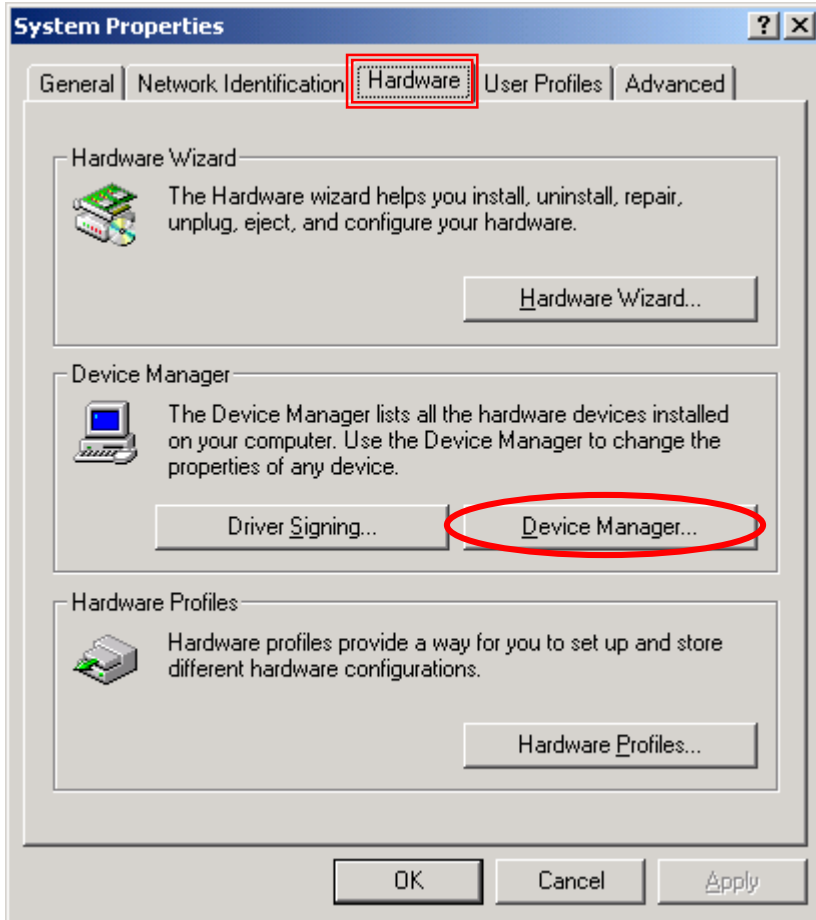


- 5. Double-click the **System Icon** (circled below) in the Control Panel.
Control Panel displays similar Icons to those shown below depending on environment.

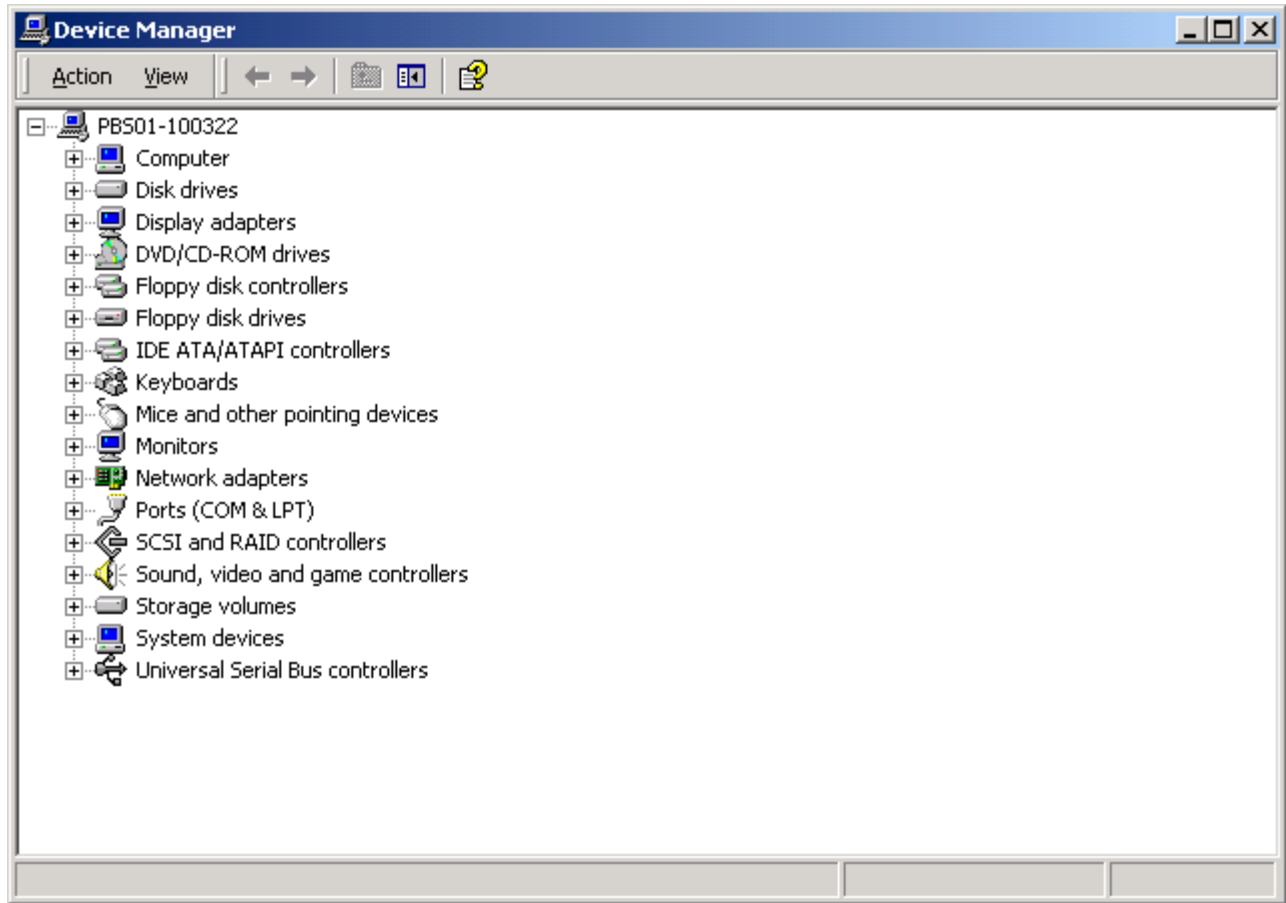


- The **System Properties** window pops up with the **General** tab selected

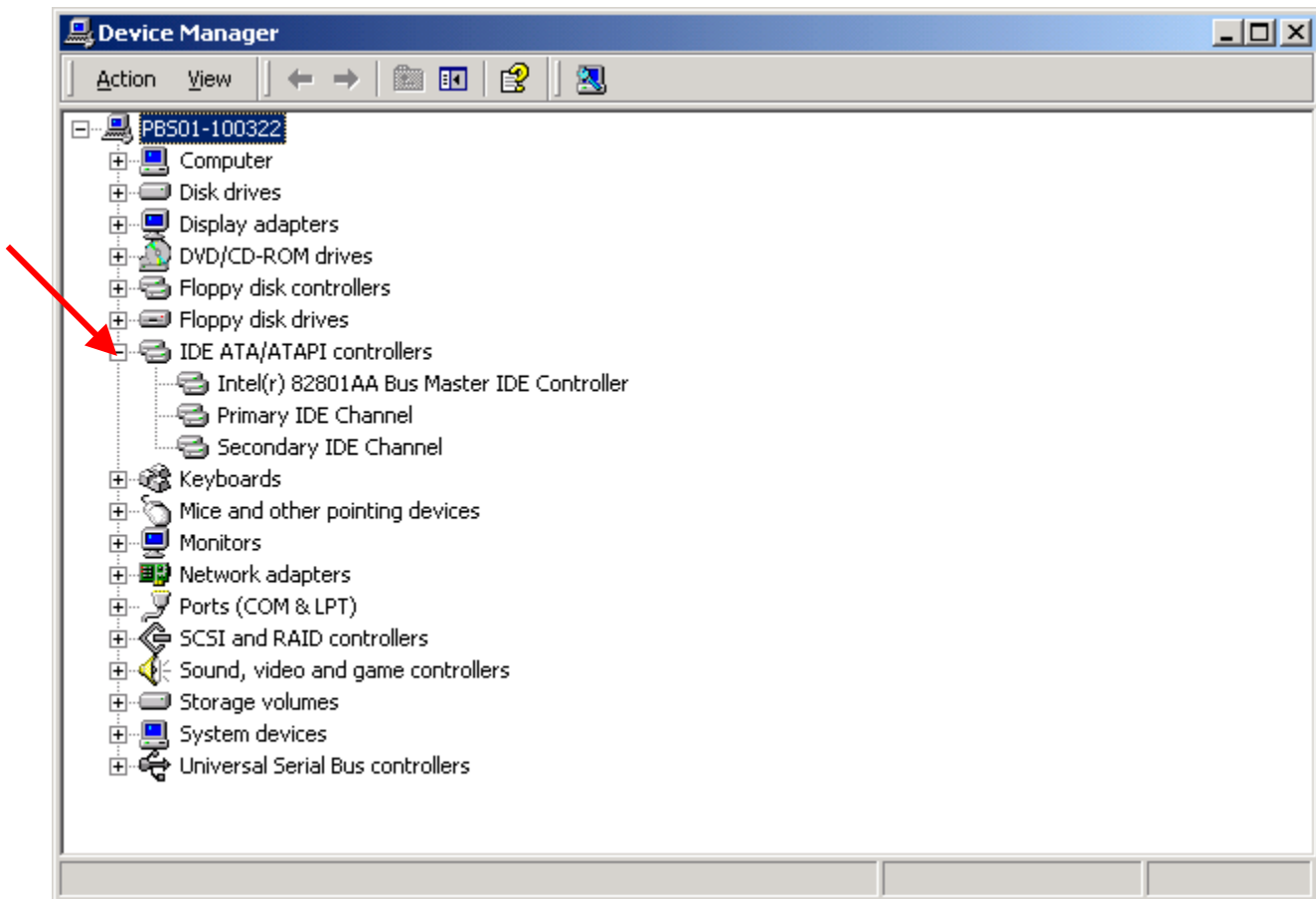
- 6. Select the **Hardware Tab** (boxed with a double-line below).
- 7. Single-click on **Device Manager** as circled below.



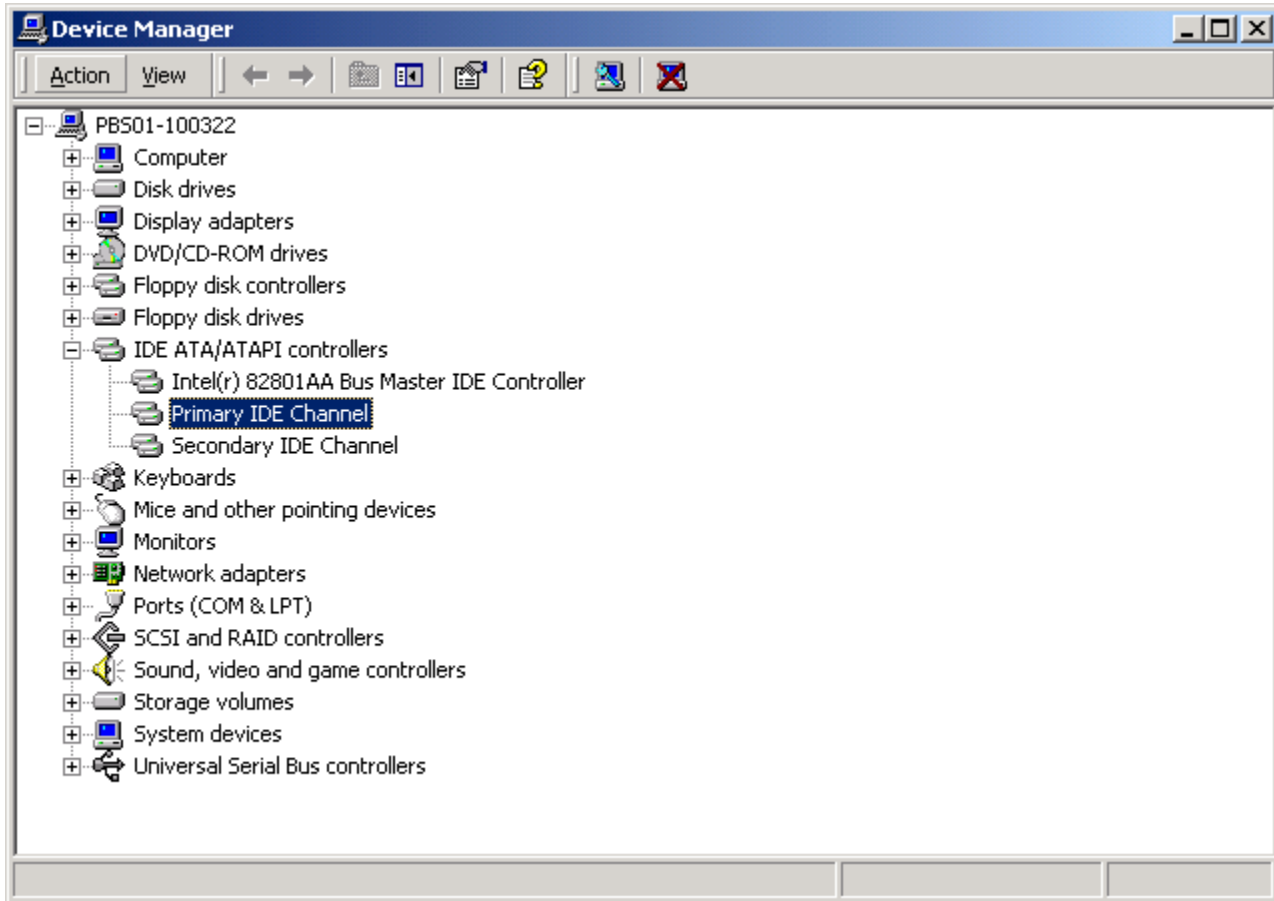
- The **Device Manager** window pops up as shown below.



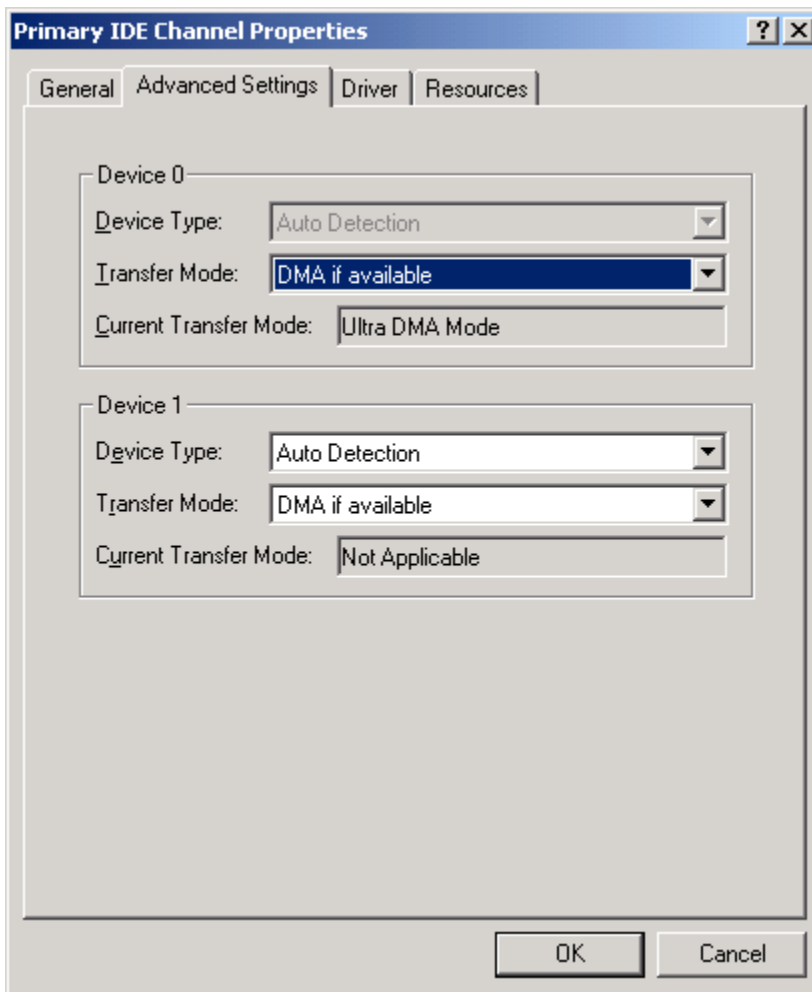
8. Expand the **IDE ATA/ATAPI Controllers** icon with a single mouse click on the plus (+) sign to the left of the directory name (shown below).
- The **IDE ATA/ATAPI Controllers** icon expands displaying the manufacturer of the controller listed first followed by the **Primary IDE Channel** and possibly a **Secondary IDE Channel**.
 - If your motherboard BIOS is not configured to use the **Secondary IDE Channel**, this option is missing from **Device Manager**.



9. Double-click the appropriate channel to modify the Properties (shown below).
Primary IDE Channel or **Secondary IDE Channel** depending on the location of your drive
- Refer to the drive setting location you recorded earlier from the motherboard BIOS.



- A new **Primary IDE Channel / Secondary IDE Channel Properties** window pops up as shown below (depending on the placement of your drive).
- If **Transfer Mode** shows **DMA if available** selected and **Current Transfer Mode** shows **Ultra DMA Mode** grayed out, change the **Transfer Mode** settings to **PIO Only**.
- If **Transfer Mode** shows **PIO Only** selected and **Current Transfer Mode** shows **PIO Only**, change the **Transfer Mode** setting to **DMA if available**.



10. Click the **OK** button after modifying the Transfer Mode. The computer asks you to reboot to accept changes.
11. Click **OK** to reboot.
12. Test the functionality of the Pioneer device.